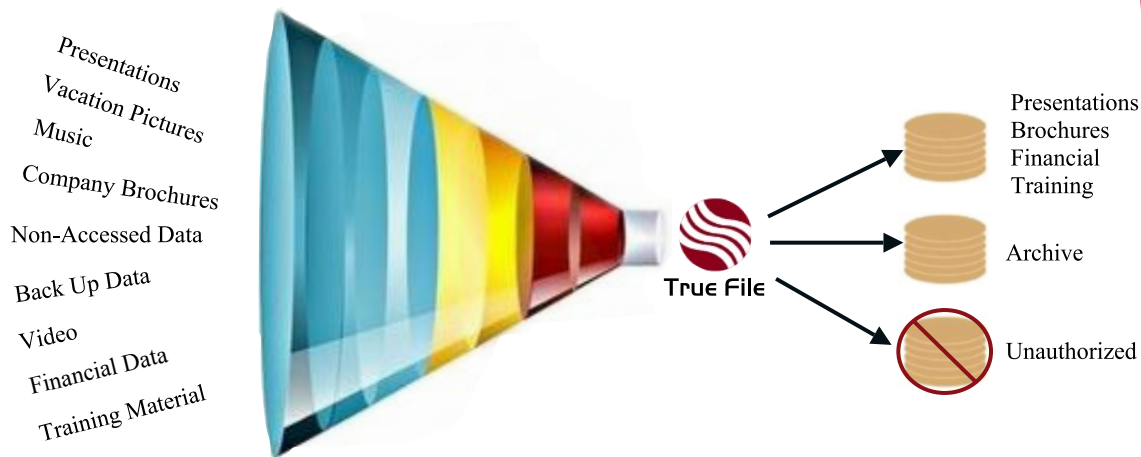




Managing Data is Our Policy

Today Data is increasing at an alarming rate. This is driven by new devices being attached to networks like Smart Phones and Tablets. Books are increasingly being offered in digital formats with the desire to move away from printed material to reduce cost and improve the environment.

The challenge is to manage the data while improving efficiency. Most products fall short by only identifying the type of files stored, this is where the value of TrueFile really begins. TrueFile solves this data problem by allowing you to manage the data through dynamic filtering and automated policies to free up expensive network storage space.



Managing your data efficiently is essential to cost control and understanding growth.

Identify-

Uncover specific file content with Dynamic Filtering. Quickly identify which users are consuming the most capacity with email notification. Identify anomalies or forecast future growth.

Report-

Create reports for a full analysis on all shares selected or specific data sets. Identify user habits to understand the type of data being stored, or data that can be eliminated from future backups to improve performance and efficiency.

Manage-

Automate policies for repeated actions or insure compliancy. Policies can move data or take action based on file type or age. Policies can be scheduled for a latter time. Archiving can be scheduled to place a "stub" in the original location as a shortcut to the new file location after migrating.



Managing Data is Our Policy

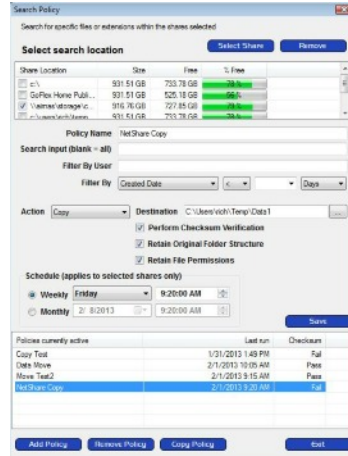
Policy Based Data Management

Storage policies allow you to automate an otherwise manual task or insure you remain compliant. Remove inappropriate content as a scheduled event or on demand. Migrate data based on age or locate data belonging to specific users to archive.

Policies Contain

- Search by File or Extension
- Filtering by File, User, Age, or Last Accessed
- Retain File Permissions and Folder Structure
- Frequency; Weekly or Monthly

(By default all policies use Checksum and are logged)

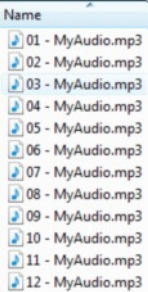


Automated Policy Management

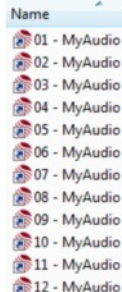
Archiving

Move data that has not been assessed for a specific period of time to a new storage medium to reduce cost. TrueFile can perform this by setting a policy, migrating the data and leave a "stub" behind as a shortcut to insure users can still locate the data from the previous location. This eases the disruption until a more permanent method can be implemented.

Before Archiving Data in User1 Folder

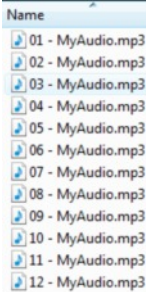


After Archiving Data in User1 Folder



Shortcut to New File Location

New Location Data in User1 Folder



Shortcut redirects user to new data location, where the actual file is now stored which frees up disk space in the previous location.

The Complete Solution

Whether you are a consultant needing an advantage to increase your value-add or an IT enterprise professional, TrueFile can discover data that would take months of gathering manually with many different tools. TrueFile produces results and improves efficiency.

Partial List of features:

- Agent-Less for Server Stability
- Multi-Threaded for efficiency
- Data Verify and Logging
- Scheduling for future events
- Exclude / Include Rules
- User tracking to file level
- Extensive Search - file, user, date
- Data Archive, Move, Copy, or Delete